



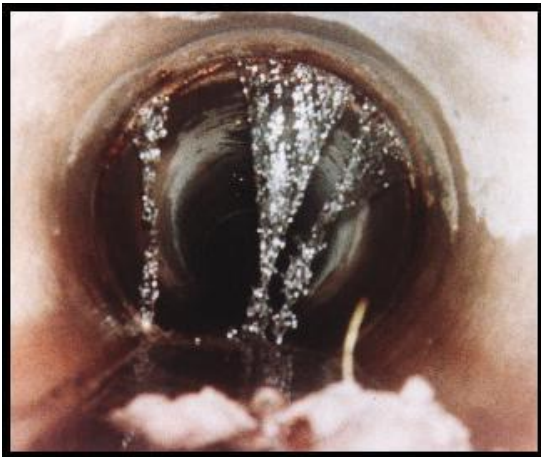
Public Works Department

2828 Allouez Avenue, Bellevue, WI 54311
Phone: (920) 468-5225
Fax: (920) 468-4196
www.VillageofBellevue.org

SANITARY SEWER INFORMATIONAL WARNING

PER BELLEVUE ORDINANCE 8.80 NO CLEAN WATER DISCHARGES. NO PERSON SHALL DISCHARGE OR CAUSE TO BE DISCHARGED ANY UNPOLLUTED WATERS SUCH AS STORMWATER, GROUND WATER, ROOF RAIN, SUBSURFACE, DRAINAGE OR COLLECTING WATER TO ANY SANITARY SEWER. IF YOUR SUMP PUMP OR ROOF DRAINS ARE CONNECTED TO THE SANITARY SEWER SYSTEM, THIS MUST CEASE IMMEDIATELY.

The Village of Bellevue has been experiencing a significant amount of inflow and infiltration into the sanitary sewer system that is over and above the amount of gallons being metered for water sales. Each year the Village cleans and televises the sewer lines to keep ahead of any maintenance problems or leaks that could contribute to this type of problem. We still haven't been successful in ridding this discrepancy. That is why we are concerned that some of our residents may be piping their sump pumps (storm water) into the sanitary sewer line and unwittingly putting undo costs onto the rate payers of Bellevue.



Last year alone, over 325 million more gallons entered our sanitary sewer system than was billed to customers. That amounts to 47% of the total volume charged to Bellevue by the Green Bay Metropolitan Sewerage District (GBMSD). While the Village ranks in the lower 15% for sewer rates in Wisconsin, we cannot as customers continue to sustain and treat clean sanitary water. The GBMSD is beginning a capital improvement program and has informed the Village that treatment costs will continue to rise over the next 10-years.

The Village has put together a three phase program that will work at reducing infiltration and inflow into the sanitary sewer. 1. Conduct regular manhole inspections and televising of sanitary lines. 2. Smoke testing the mains and laterals. If there is any connection that is open to the air, the leak or connection will be apparent. 3. Start a Clearwater connection inspection program that will investigate connections of foundation drains and sump pumps to the sanitary sewer.

As you can see, your cooperation is essential. Together we can reduce the amount of clear water entering our sanitary sewers. Please remove all storm water drainage from the sanitary sewer system immediately! Inspections will be conducted in suspected areas of higher flow. Illegal connections result in higher rates for all users, and could result in a citation. Please contact the Village offices for additional information.