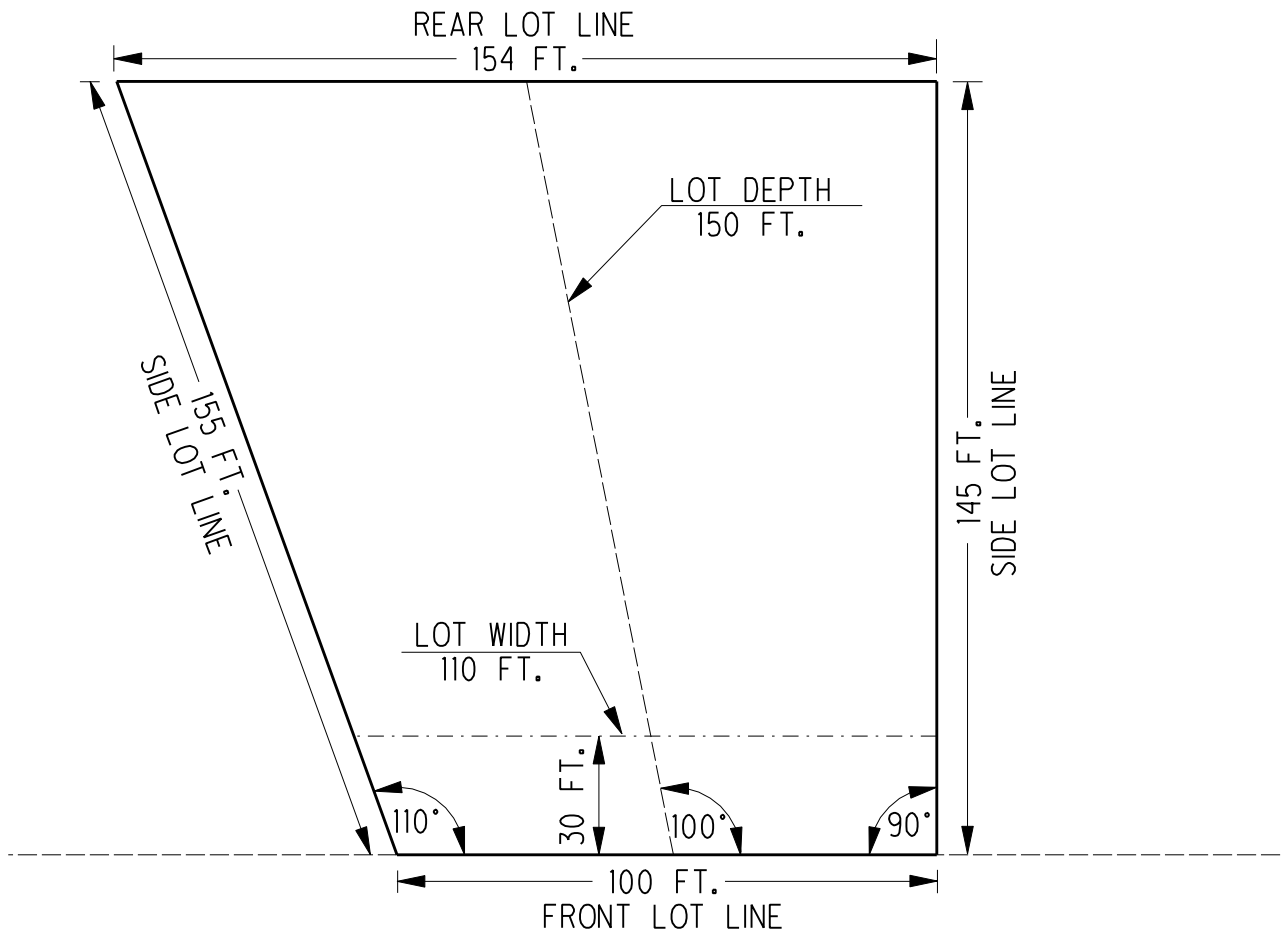


ARTICLE III, SUBSECTION B,  
DEFINITION NO. 72 & 81

LOT WIDTH AND DEPTH EXPLAINED



LOT WIDTH is the horizontal distance between the side lot lines of a lot, measured at the narrowest width within the first 30 feet of lot depth immediately in back of the front yard set back line.

LOT DEPTH is the mean horizontal distance between the front lot line and the rear lot line of a lot, measured within the lot boundaries